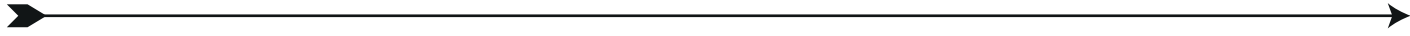


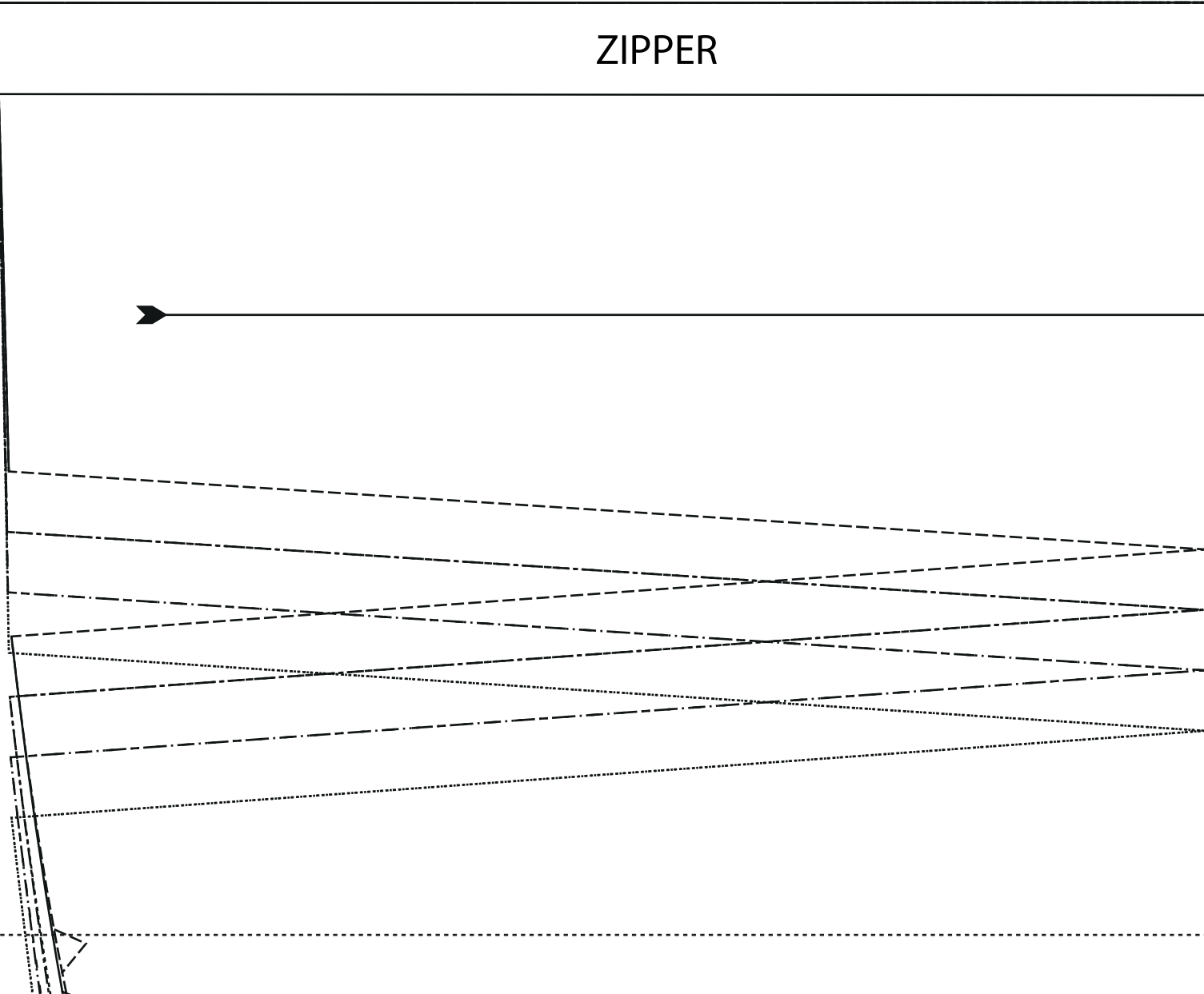
A1

ZIPPER



DART SIZES

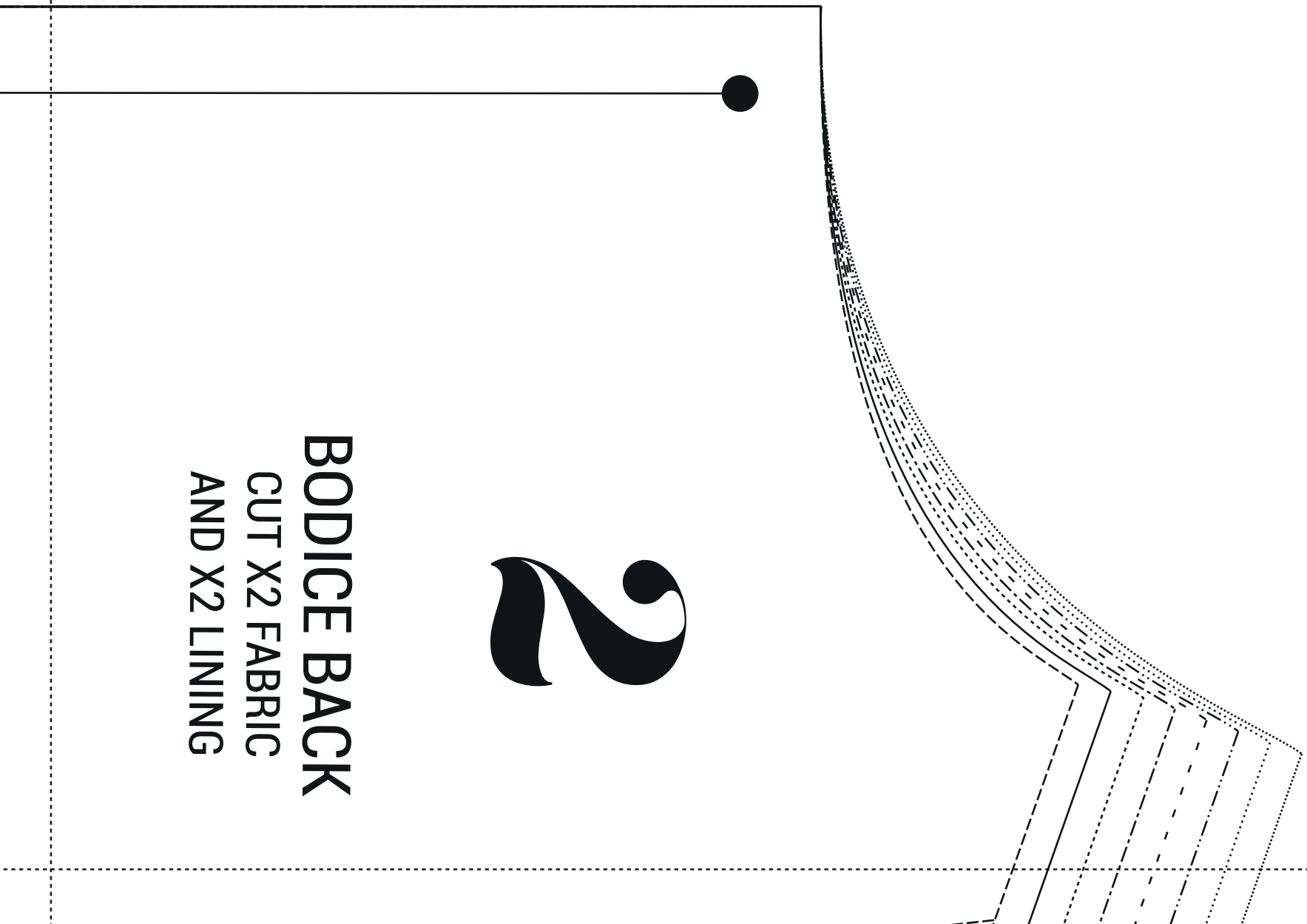
2-4 6-8 10- 14-
12 16



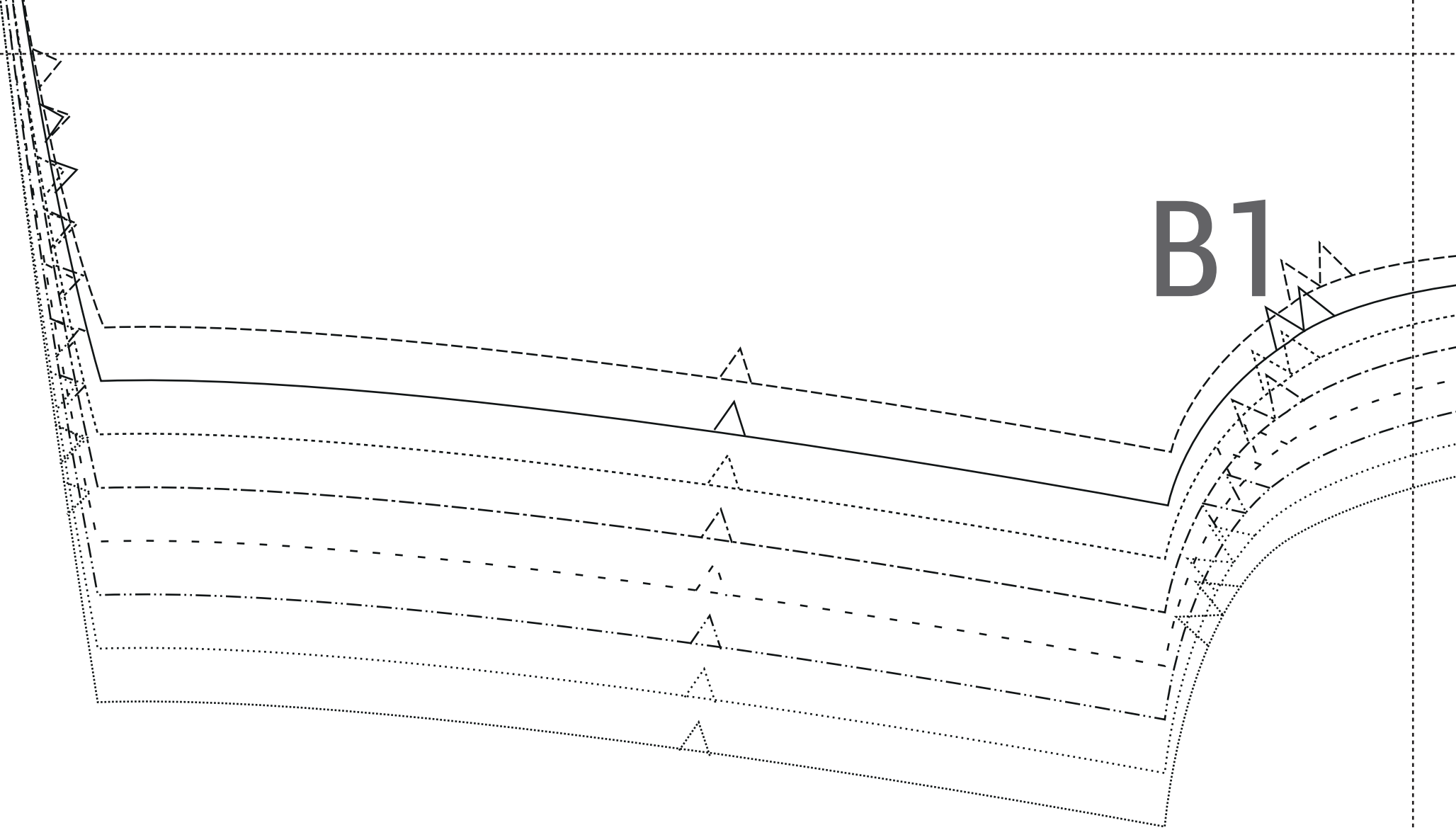
A2

2

BODICE BACK
CUT X2 FABRIC
AND X2 LINING



B1



The image features a complex geometric design on the left side, consisting of several curved lines in solid, dashed, and dotted styles. These lines originate from the left edge and curve towards the right, where they meet a series of parallel lines that form a perspective effect, suggesting a corner or a folded surface. A vertical dashed line is positioned on the far left, and a horizontal dashed line is positioned near the top. The overall composition is minimalist and architectural.

B2