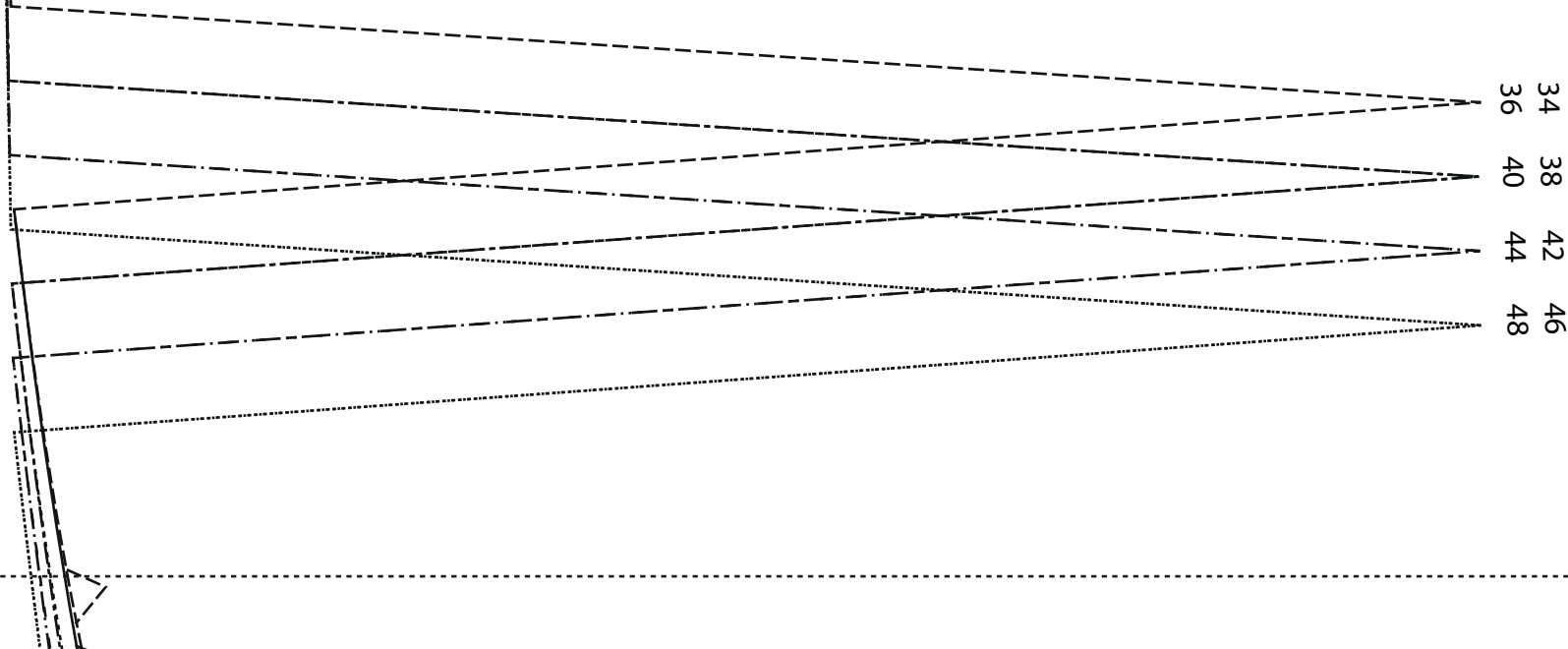


A1

FERMETURE À GLISSIÈRE



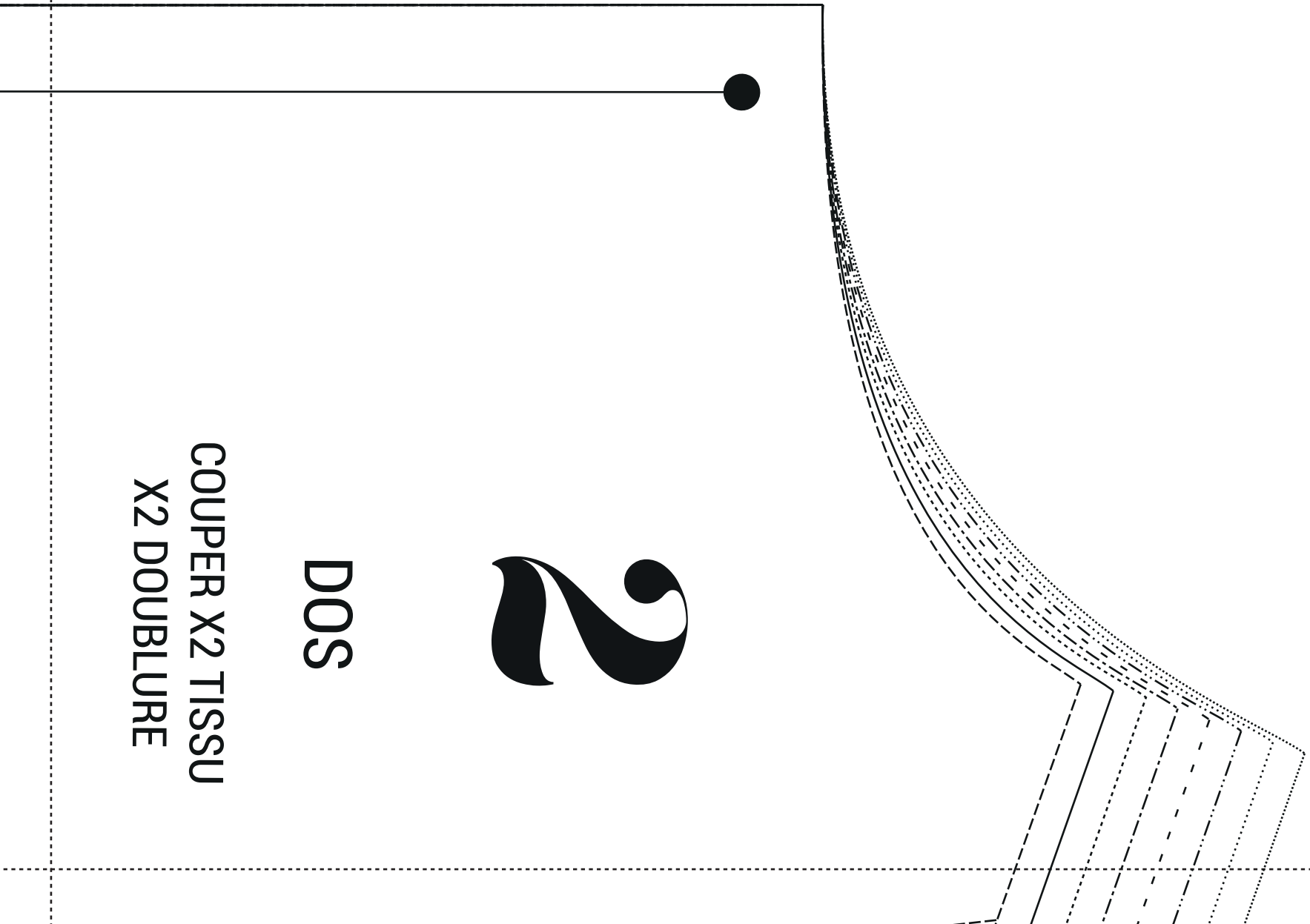
TAILLES DE PINCES

A2

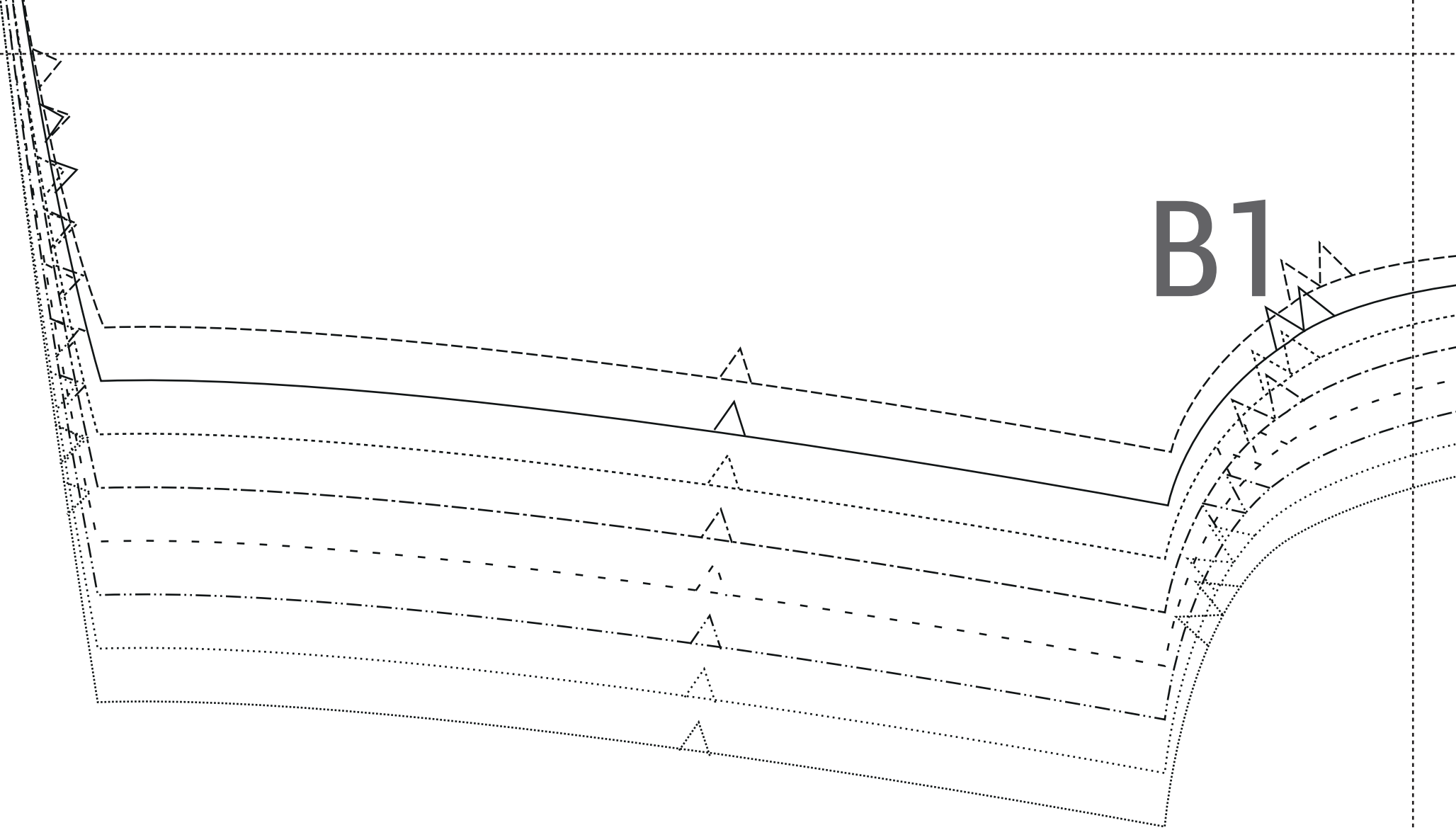


DOS

COUPER X2 TISSU
X2 DOUBLURE



B1



The image features a complex geometric design on the left side, consisting of several curved lines in solid, dashed, and dotted styles. These lines are arranged in a way that suggests a perspective or depth, with some lines appearing to recede into the distance. A vertical dashed line is positioned on the far left, and a horizontal dashed line is positioned near the top. The overall composition is minimalist and modern.

B2